

KNOW BEFORE YOU GO

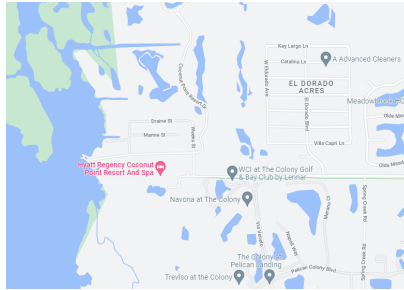
FA&M Conference

WE LOOK FORWARD TO WELCOMING YOU TO
HYATT REGENCY COCONUT POINT RESORT & SPA!

Our Hyatt Regency Coconut Point family is eagerly awaiting your arrival, and we are delighted that you have chosen to spend your upcoming time with us. Your stay is fast approaching, and we cannot wait to welcome you to your Southwest Florida home away from home!

While you pack and prepare, here is some light reading material to ensure you make the most of your visit with us and have a truly exceptional stay!

FIND IT ON THE MAP



FACT SHEET

WHAT TO WEAR

Resort casual dress is welcomed throughout the resort. We do require shoes & cover up in the lobby and public areas. Layers are suggested for indoors, as everyone has a different internal thermometer. Don't forget to apply sunscreen, and reapply often when outdoors. The sun is strong in Southwest Florida! Bring your reusable water bottle and stay hydrated.

WHAT WEATHER TO EXPECT

Be sure to check the Weather Forecast before you travel and pack accordingly. We expect warm humid temperatures with rainstorm chances in the Summer Months – May-early October.

MONTH	JAN	FEB	MAR	APR	MAY	JUN
AVG HI	74°	76°	79°	83°	86°	89°
AVG LO	56°	57°	61°	64°	69°	74°
MONTH	JUL	AUG	SEP	OCT	NOV	DEC
AVG HI	89°	90°	88°	85°	80°	76°
AVG LO	75°	76°	75°	70°	63°	59°

NEED SOMETHING? TEXT US ANYTIME (239) 309-7115

Whether you need more towels, or forgot something, text us and your every need is covered

GETTING TO THE HOTEL

Ft. Myers Int'l Airport / RSW is 15 miles (24 minutes) drive

Rideshare/Taxis are readily available at RSW. The Resort does not offer a shuttle service from the airport.

PARKING

Valet Parking –
\$14 / Daily (Event only)
\$32 / Overnight

We offer covered garage & outdoor parking lots. Once checked in, your room keys will grant you access to the self-parking lot throughout your stay.

Complimentary charging stations for electric vehicles are available in our valet parking area. Self-parking rates apply.

CHECK-IN/ CHECK-OUT

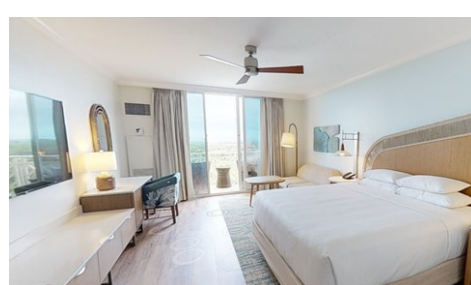
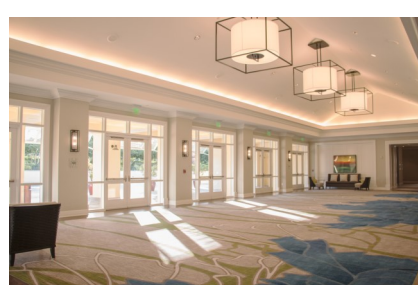
4:00 pm/11:00 am

**Early check-in/late check-out is based on hotel occupancies, and is subject to availability at the time of inquiry*



To explore and book resort activities scan here!

**Amenities listed subject to availability*



**HYATT
REGENCY**

COCONUT POINT
RESORT & SPA