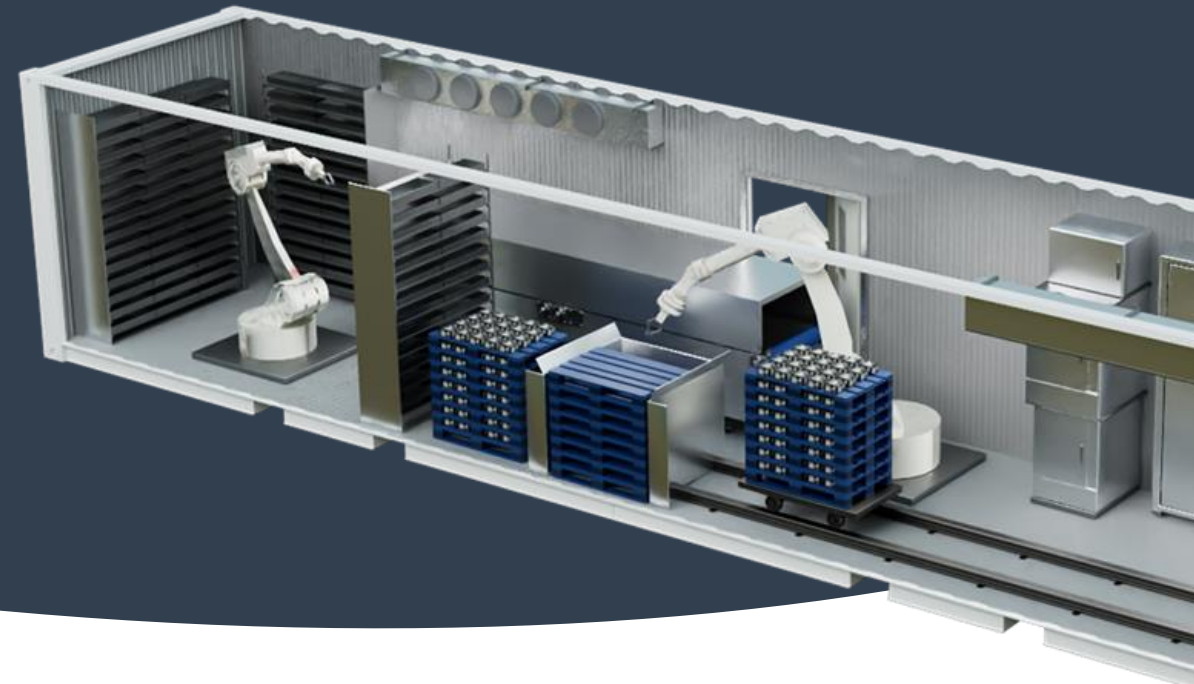


Cutting Cost, Carbon and Complexity:

The Road to Decentralized Food & Beverage Manufacturing with **Autonomous Micro-Factories**

Presenter: Wayne McIntyre, CEO





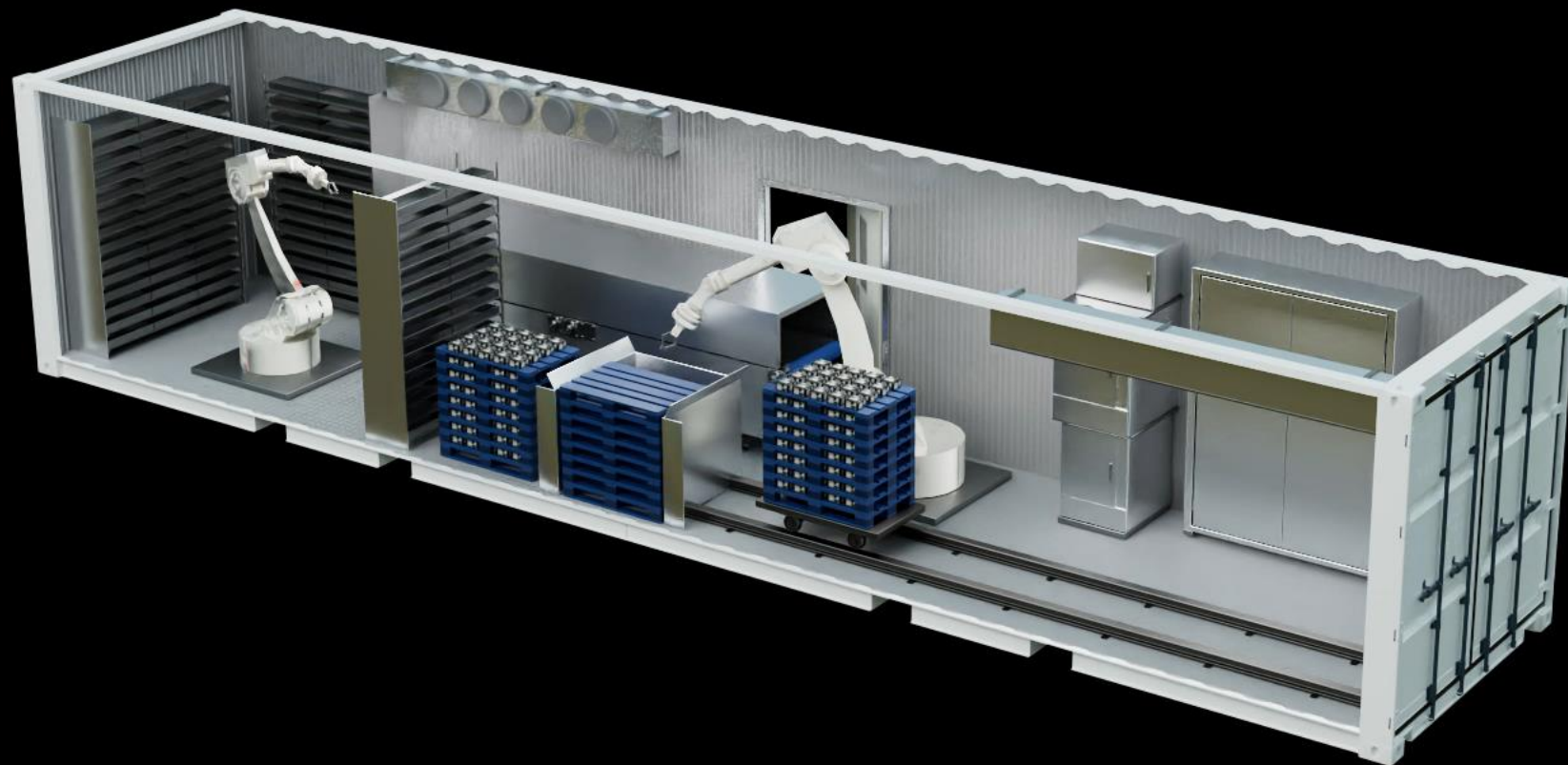
What is a micro-factory?

What is a micro-factory?

- 1 It's small(er)
- 2 Tech enabled
- 3 On demand
- 4 Localized
- 5 Autonomous?



What's
inside?





SUPPLY CHAIN
RISK/COMPLEXITY



WASTE

WHY?



CO2



COST



DECENTRALIZE



DECARBONIZE



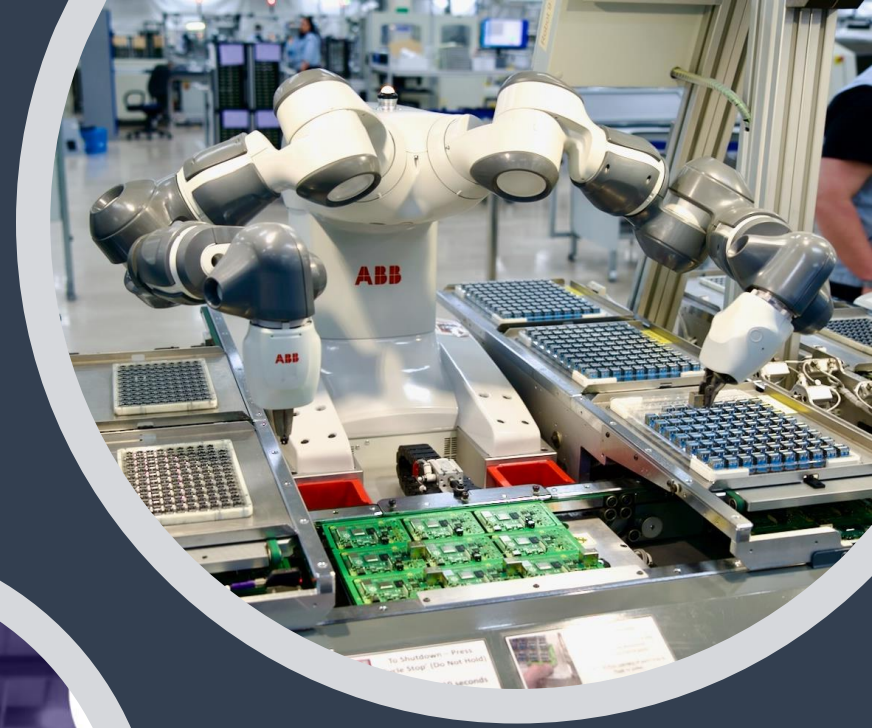
DE-RISK



DECREASE \$

How it works - The "4
Ds"

Where can we find micro-factories?





What about food manufacturing?



TOPLOAD ONLY

Silver

80428



ChatGPT 4

 You

ChatGPT 4 ▾

W You

Can you search the web for an example of micro-factories in the food industry other than Unilever?

ChatGPT 4 ▾

 **You**

Can you search the web for an example of micro-factories in the food industry other than Unilever?

 **ChatGPT**

In the food manufacturing industry, Relocalize is a notable example of a company leveraging micro-factories. They have partnered with Southeastern Grocers to introduce Party Cubes, the world's first hyper-local, certified plastic-negative, packaged ice produced on-site and on-demand at their micro-factory. This process significantly reduces water waste and trucking CO2 emissions, showcasing an innovative approach to sustainable and localized food production.



Challenges / Barriers

Challenges / Barriers

- 1 Food automation tech lags other sectors
- 2 Major transformations are HARD
- 3 It only works well for certain products





HEAVY



**HIGH CUBE
FILL**



**SIMPLE INPUT
SUPPLY CHAIN**



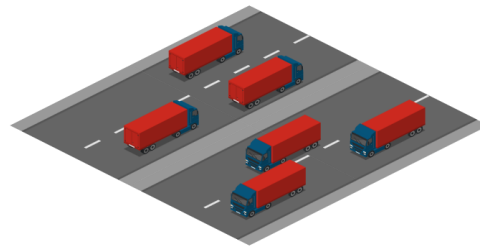
**EXPENSIVE
STORAGE**

Where micro-factories make sense

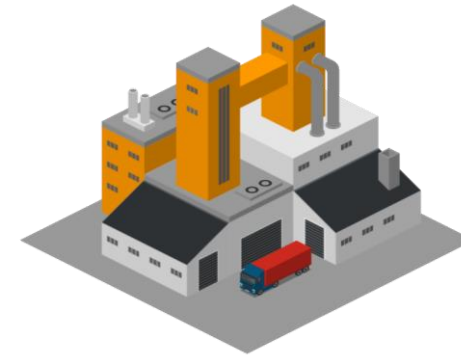
Real world results at Relocalize



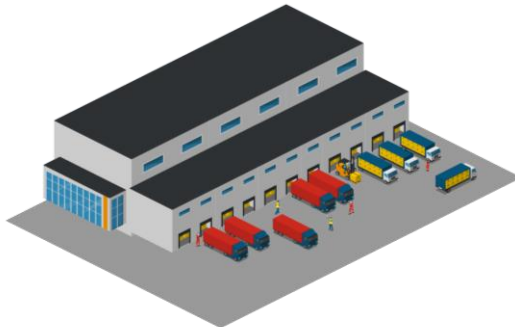
90%↓ transport CO2 vs regional competitors



Zero↓ middle mile logistics and upstream supply chain risk



10%↓ wholesale cost saving



>70%↓ distribution operations cost reduction

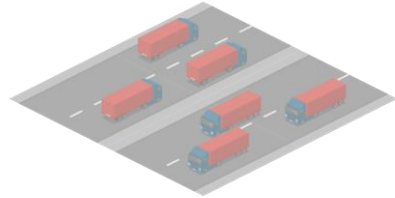


>60%↓ retail operations cost and waste ("shrink") savings

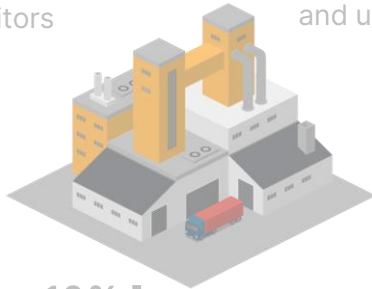
Real world results at Relocalize



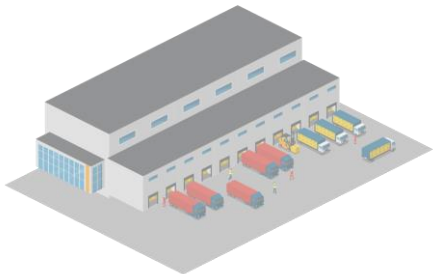
90%↓ transport CO2 vs regional competitors



Zero↓ middle mile logistics and upstream supply chain risk



10%↓ wholesale cost saving



70%↓ distribution operations cost reduction



60%↓ retail operations cost and waste ("shrink") savings

>30% total cost reduction
+
ESG impact
+
Supports retail CEO priorities

EDITORS' PICK

Meet The Startup That's Putting Ice Factories In Shipping Containers For Winn-Dixie Supermarkets



NEWS | SUSTAINABILITY

Southeastern Grocers Pilots World's First Autonomous Microfactory



**Best Climate Change Innovation
Carbon Emissions & Clean Energy**

Relocalize

RETAILERS

Southeastern Grocers pilots robotic ice-making 'micro-factory'

THOMAS A Geometry Company Industry Insights +

Insights Articles and White Papers by Keyword

Manufacturing & Innovation

The World's First Autonomous Micro-Factory Manufacturers Ice

Nolan Beilstein | April 10, 2023 | Share: [in](#) [f](#) [t](#) [e](#)

SUBSCRIBE

Relocalize Raises \$2.5M to Decarbonize Food & Beverage Manufacturing

Relocalize nabs \$2.5m to advance F&B autonomous micro-factory

The round is being led by i4 Capital and Waterpoint Lane, with participation from RGS Ice.

HOW TO BE A VISIONARY LEADER

RealLeaders

THE COMMUNITY FOR IMPACT

300

TOP IMPACT COMPANIES IN 2023
5TH ANNUAL RANKING

SEE WHO'S MAKING WAVES OF CHANGE

Progressive Grocer Names Best New Products of 2023

This year's Editors' Picks honorees span the entire grocery store

By Progressive Grocer Staff 9/15/2023



SE Grocers Party Cubes \$3.99 per 10-pound package

What's so innovative about ice, you ask? Southeastern Grocers partnered with Relocalize to introduce Party Cubes, which are manufactured in the world's first autonomous micro-factory and designed to help eliminate middle-mile logistics to reduce global greenhouse-gas emissions, water waste and plastic pollution. Not only is the super-premium cubed ice made efficiently, locally and on-demand for select stores, but it also offers easier storage and an environmentally conscious and affordable alternative to standard ice products. We hope that answered your question.

BETTER ICE

by Relocalize

Sustainability Product of the Year

Business Intelligence Group

WAYNE McINTYRE
CHIEF EXECUTIVE OFFICER

wayne@relocalize.com

RelocalizeTM

Food & beverage supply un-chained

