

# Supplier Profiles

Special Advertising Section

## Silverson Machines

For nearly 60 years Silverson has specialized in the manufacture of quality high shear mixers for the food processing industry.

With customers in over 140 countries Silverson continues its role as a world leader in the development of high shear mixing solutions and innovations specifically for applications affecting the food industry. Whether it's a mixer from Silverson's standard range, or a custom-designed machine built to specific requirements, time after time, companies specify Silverson mixers as "standard" equipment for their manufacturing process.

Silverson high shear mixers are supremely efficient and rapid in operation, and are capable of reducing mixing times by up to 90% when compared to conventional agitators or stirrers. The action of any Silverson mixer can be modified with the use of rapidly interchangeable workheads which enable any mixer to:

- Mix
- Emulsify
- Homogenize
- Solubilize
- Suspend
- Disperse
- Disintegrate

With a customer base that includes many of the world's largest companies, Silverson is constantly applying their experience, knowledge and commitment to both a quality product and a standard of customer service that solves today's mixing needs as well as those of the future.

To help aid customers in the selection of a mixer right for their application and environment, Silverson has an extensive array of literature, videos and a CD-Rom which address specific mixing problems within the food industry.

### High Shear In-Line Mixers

The newest 3-A certified Silverson In-Line mixers are designed to provide the most efficient and hygienic mixing system available today. Each mixer incorporates the precision-engineered Silverson rotor/stator workhead which has the capability to mix, emulsify, homogenize, solubilize, suspend, disperse and disintegrate solids and reduce processing times by up to 90%.

The design of Silverson In-Line mixers provides aeration-free mixing and easy installation. Single and multi-stage units are available. Because of their unique configuration, product cannot bypass the intense mixing zone of the Silverson rotor/stator workhead.



### Contact:

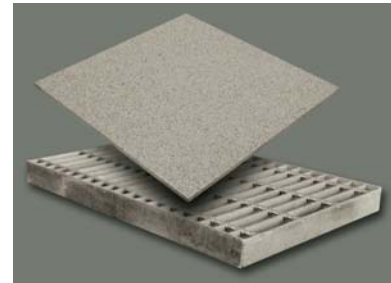
Silverson Machines, Inc.  
355 Chestnut Street  
P.O. Box 589  
East Longmeadow, MA 01028  
Phone: 800/204-6400 - 413/525-4825  
Fax: 413/525-5804  
Web: www.silverson.com

## SlipNOT® Metal Safety Flooring

Slips and Falls Stop Where SlipNOT® Flooring Starts!

SlipNOT® Metal Safety Flooring products represent state of the art technology in anti-slip metal plate, grate, stair treads, nosings and basically any metal safety shape, size or specification known to man! SlipNOT® provides 100% rugged, durable and long lasting surface coverage to all metal substrates, not merely pinpoints of hardness covering less than 5% of the surface. SlipNOT® is the one time answer for safety. The patented SlipNOT® product and process deposits molten metal plasma onto steel, aluminum and stainless steel. The resultant super-hard, 62 rockwell on a "C" scale (martensitic) surface provides unparalleled durability and traction in even the most demanding wear, abrasive and slippery environments.

Food processing plants, dairies, cheese plants, juice plants and others utilize SlipNOT® to increase productivity and worker safety while reducing injury and liability. SlipNOT® is NSF APPROVED and available in thickness from 1/8" thick on up.



SlipNOT® Stainless Steel Grip Plate® is the perfect solution for slippery worker platforms, steps and flooring. Far exceeding OSHA and UL recommended Coefficient of Friction; SlipNOT® provides maximum traction even in wet and oily environments.

SlipNOT® Stainless Steel Grip Plate® is used by companies such as: Campbell's, Nestle, Tropicana, Kraft, Leprino Foods, Pillsbury and many others.

**SlipNOT®**  
Metal Safety Flooring

### Contact:

SlipNOT® Metal Safety Flooring  
2545 Beaufait Street  
Detroit, MI 48207  
Phone: 800- SlipNOT Fax: 313-923-4555  
e-mail: info@slipnot.com  
Web: www.slipnot.com  
Contact: Christina Molnar