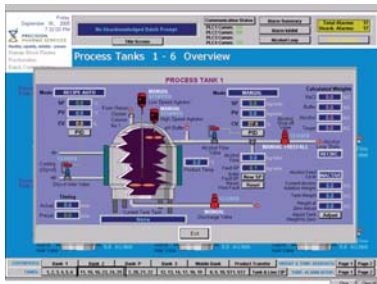


Control & Power Systems

Established in 1979, Control & Power Systems, Inc. (CPS) specializes in Automation Engineering, Validation Services and Skid & Panel Fabrication for customers in the Specialty Chemical, Pharmaceutical, Food & Beverage, Water & Wastewater and Environmental Control industries.

CPS maintains a 15,000 square foot UL508A listed fabrication facility, with a clear working height of 22 feet, and areas for project staging and factory acceptance testing. A team of over 40 staff consisting of electrical and mechanical engineers, programmers, CAD designers, validation experts, instrumentation and calibration technicians and shop craftsmen enables CPS to "design and build" as a single-source supplier.



- SCADA Configuration
- PLC Programming
- DCS Configuration
- PID Loop Tuning
- S-88 Batch Software
- Plant Data Historians
- Automated Traceability
- Wiring Diagrams

- Electrical and Pneumatic Control Panel Assembly
- Motor Control Cabinets, Consoles, Sheds
- Blending and Feed Process Skid Fabrication
- Installation Supervision
- Startup / Commissioning
- Instrument Calibration
- Validation Documents
- O & M Documentation
- Remote Monitoring
- Spare Parts Supply



Experienced Personnel + Proven Track Record



Contact:

Erik Astman, Product Account Manager
 Control & Power Systems, Inc.
 17 Spielman Rd., Fairfield, NJ 07004
 Toll-free: 800-305-1600 • Phone: 973-575-3300 Ext. 39
 Fax: 973-575-5300
 Email: erik.astman@c-ps.com
 Web: www.c-ps.com

E²M/Polytron

LEADERS IN SYSTEMS INTEGRATION

The E²M/Polytron alliance forms a Packaging and Manufacturing System Integration group with 20+ years of experience, serving the Food, Beverage, Consumer Products and Pharmaceutical markets. E²M focuses on Project Management, Consulting, Modeling, and the Mechanical System Engineering portion of our projects while Polytron provides the Power, Automation, Information Systems, and Training expertise.



Our Training Station provides hands-on system experience for operators even before the installation is complete.

Our services include:

- Business Planning and Project Impact Analysis
- Packaging System Design
- Process and Utility System Integration
- Warehouse Design and Analysis
- Equipment and Installation Procurement
- Control Systems Design & Development
- Modeling Services (PolySimSM – Simulation and Emulation)
- Project and Construction Management
- Startup, Training, and Customer Support Services

We exhibit robust planning, engineering, and project management skills, and support that skill base with a methodology and tool set that is second to none in our field. We are known for our modeling and simulation capabilities, planning and analysis tools, as well as an impressive in-house training organization. Our Project Execution Methodology focuses on defining and achieving success measures based on client business needs. We develop formal startup and commissioning plans resulting in steep startup curves and sustained line performance.

E²M/Polytron is an organization of professionals who are focused on the development and implementation of efficient, cost effective, highly operable and maintainable manufacturing and packaging systems.



Contact:

Don Baldwin or Brent Stromwall
 E²M/Polytron
 6734 Jimmy Carter Boulevard, Norcross, GA 30071
 1-800-622-4326
 www.polytron.com • www.e2m.com • www.polysim.net