

Elm Electrical, Inc.



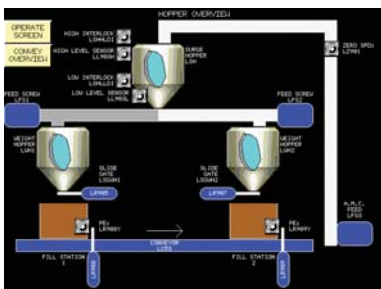
Elm Electrical has been powering productivity in the food and beverage industry since 1971. Through the implementation of innovative automation and mechanical systems, Elm will help your company boost productivity and reduce cycle time.

Our delivery of key engineering disciplines allows us to offer a complete turnkey solution through ONE vendor interaction. You are able to continue concentrating on your production requirements, while Elm delivers your new system.

Our broad portfolio of capabilities includes:

- Design and Construction of Facility Modifications
- Power Distribution Design and Implementation
- Automation Design and Software Integration
- Packaging Equipment and Material Handling Integration
- Control Panel Assembly
- 24-7 Service and Support

Elm's proficiency at integrating a wide range of advanced automation technologies, including HMI, PLCs, high-speed motion control, robotics, instrumentation, operator interface, and automatic identification solutions provides cost effective solutions to all facets of the Food and Beverage Industry.



With experience gained from numerous applications in packaging and material handling, we deliver proven solutions that maximize the return on your manufacturing investment.

Whether your next project requires a simple modification or an entirely new production line, Elm will serve as your single-source integration partner, delivering on time and within budget!



Contact:

Kyle Richard, Director of Sales
Elm Electrical, Inc.
68 Union St.
Westfield, MA 01085
Phone: 413.568.0905
Email: krichard@elmelec.com
Web: www.elmelec.com

ESE

Engineering Solutions Experts

Optimizing the Process.
Maximizing Your Profits.



Well executed project development resulting in superior process automation is exactly what the team of experts at ESE delivers. As one of the first Rockwell Automation Solution Providers in the country and as a Wonderware InTouch Developer, ESE has become a trusted source for the food, dairy and beverage industries. Our engineering team has wide-ranging experience in sanitary manufacturing and will work with you to implement the best automation solutions. Our goal is to help you maximize your profits! Check us out at:



www.ESE1.COM\PROFIT

or call our main office: **800-236-4778**

The New Q5



Food Product Analysis
in as fast as 5 seconds!
In-line, at-line or in the
lab, test liquids, solids,
slurries and powders
with one machine!

www.ESE1.COM\Q5

ESE, Inc. • 3600 Downwind Drive • Marshfield, WI 54449