

Kline Process Systems

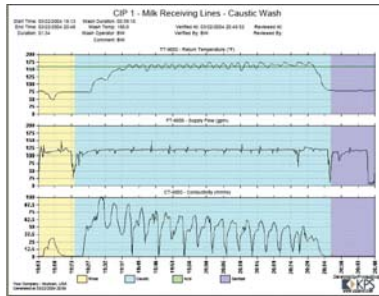


Kline Process Systems – Meets Food Industry Challenges

KPS, the Food Industry leader in process automation, develops solutions that meet the needs of plant operators and regulators. We provide process and control system design, integrated hardware solutions, and manufacturing execution software that meet the challenges faced by domestic and international manufacturers. We also provide a full-range of electrical and process piping fabrication and installation services.

Issue: Co-mingled Raw Ingredient Tracking

In response to the Bio-Terrorism Act, global market leaders and local dairies are faced with the responsibility of tracking the use of raw dairy ingredients from receipt, through processing, and ultimately to the customer and end consumer. This is a significant challenge in an industry that typically co-mingles various lots of incoming ingredients in multiple raw silos.



Solution: ProcessScope™

ProcessScope™ is a software solution that uses a web-based display and reporting information system to acquire raw ingredient, batching, and CIP data for all tanks throughout your plant. Integration with the control system allows ProcessScope™ to determine the usage of co-mingled ingredients. *You can then determine how any ingredient lot was used and where it went.*

Result: 100% Product Integrity

Questions about ingredient usage and supply are answered in minutes instead of days or not at all.



Contact: Kline Process Systems

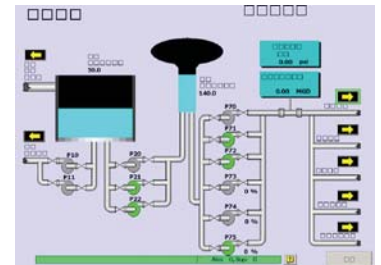
625 Spring Street
Reading, PA 19610
Ph: 610-371-0200
Fax: 610-371-0300
E-Mail: info@kpsnet.com
Web: www.kpsnet.com

Loman Control Systems, Inc.

Loman Control Systems, Inc. is a Control Systems Integrator with a focus on control and automation of plant-floor equipment in manufacturing companies. We also provide computer applications associated with the plant-floor, called Collaborative Production Systems. Collection and automated reporting of production and test data enables more informed management decisions, which is critical in today's competitive environment. Tracking of product through a production process is also a wise investment. Our scope of project involvement can be from the conceptual phase to the final start-up and test phases and may include Project Management, writing a Functional Specification, developing software, or control panel assembly (UL 508).

In addition to control and automation of equipment, Loman's clients have come to us because:

- Improving machine and personnel safety is a must
- production rates can't be met
- machines and processes break down too often, reducing production output
- control hardware is obsolete
- software upgrades are not available
- there are required equipment and process validations and a manpower shortage
- there is no present means of product tracking and traceability for recall purposes
- managers have no idea why a machine, production line or process isn't more efficient
- the plant-floor is not effectively connected to the enterprise for purposes of data management
- publicly-held companies have no means of satisfying the requirements of the Sarbanes-Oxley Act



Contact:

Loman Control Systems, Inc.
143 E. 28th Division Highway
Lititz, PA 17543
Telephone: 717-627-2820
Facsimile: 717-626-8285
Web: www.Lomancsi.com

